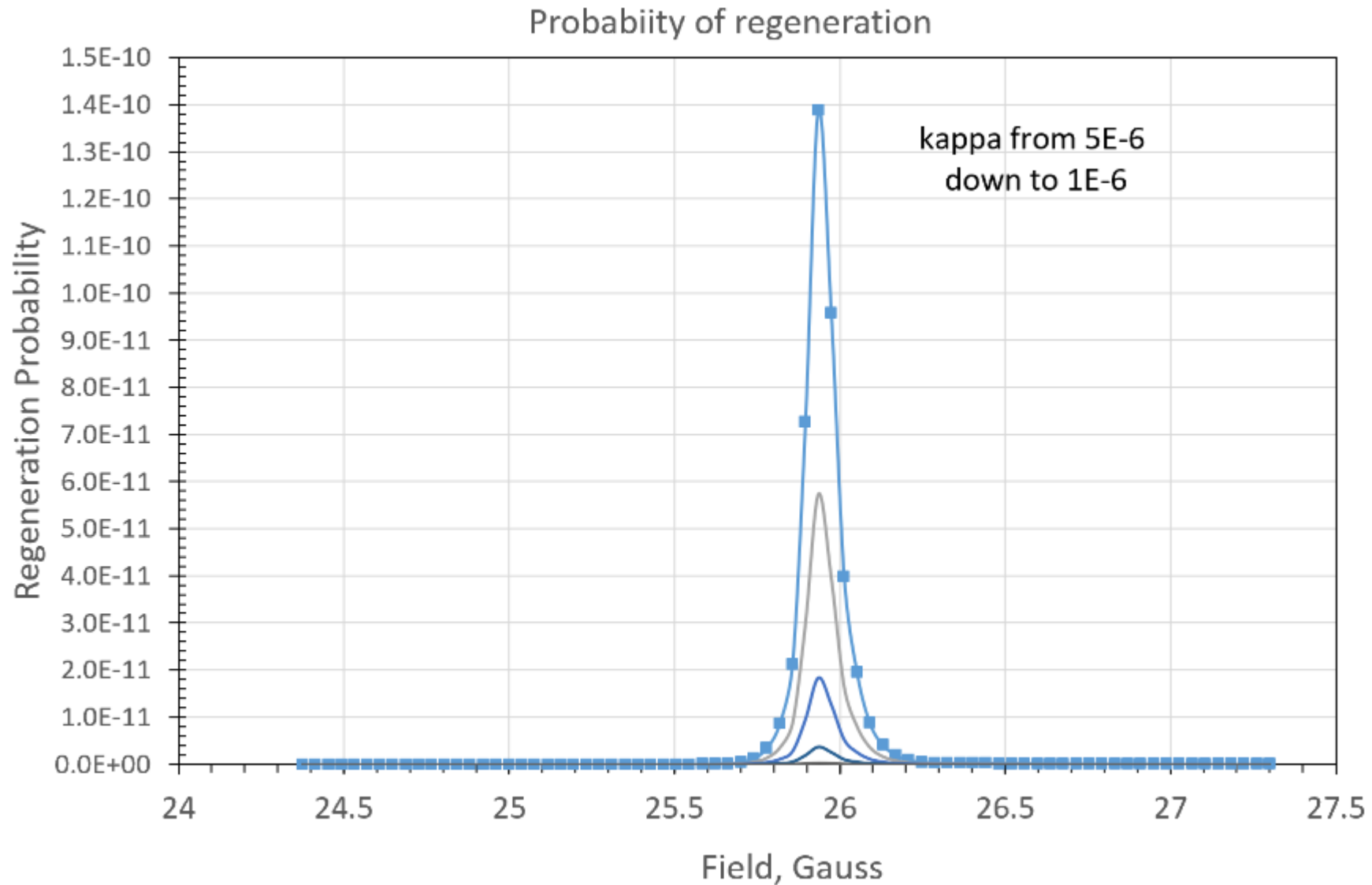


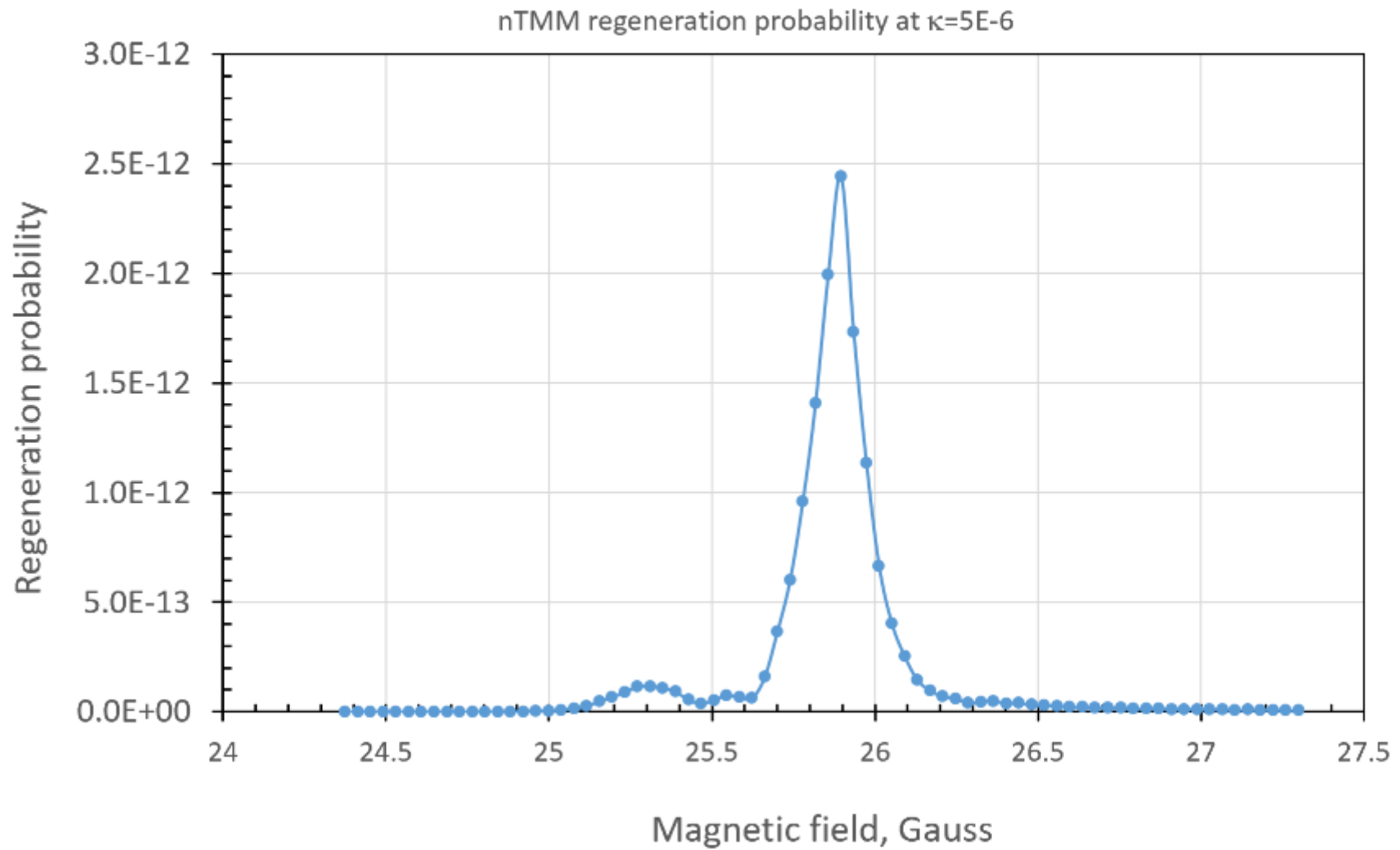
Agenda of ORNL-UTK-UKY-LU meeting 1:45 pm - 2:45 pm by Zoom

1. Sensitivity of nTMM with pressure difference - Yuri - 10'
2. Discussion of the status of the Paper on 2024 and 2021 data - 10'
3. Assembling mu-metal prototype - Shaun - 10'
4. Progress at UKY - Mubi -10'
5. Progress at LU - Linus - 10'

For the same pressure in two magnets



For two different pressures as measured



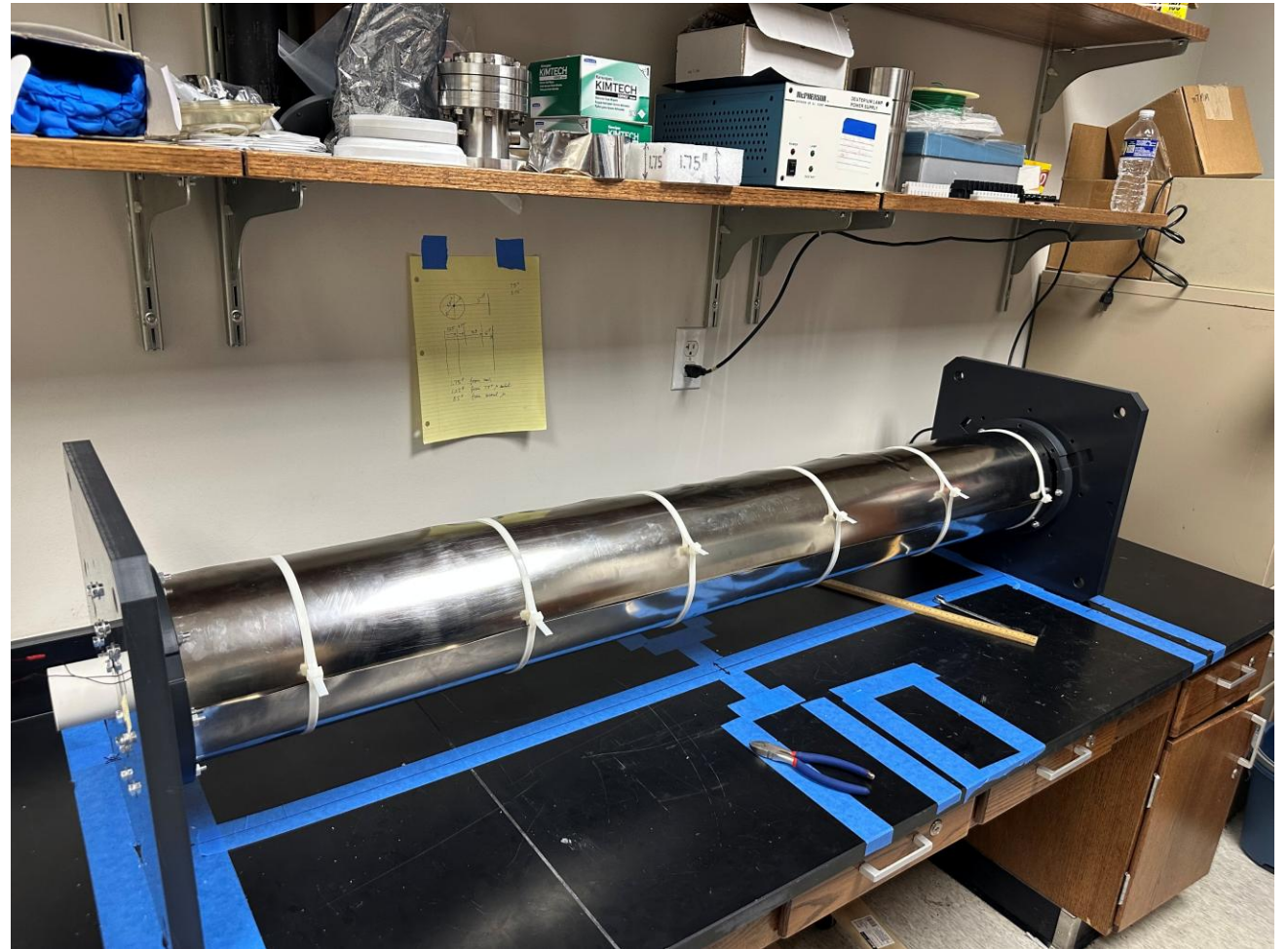
Averaged by 1000 velocities from spectrum

New Assembly of the MU METAL Prototype

Evan Michael, Connor Cambria - 11/17/2025

New Way of Attaching Shielding

- The MU METAL Shielding layer is now attached in 3 separate components, which add together to a complete cylindrical shape.
 - Placed into endcap components and carefully tightened along its length with the use of large zip-ties.
- Allows us to create the cylindrical shell without the use of pop-rivets, which caused issues with assembly.
 - Danger of rivets scratching the wires of the solenoid.
 - Presence of the rivets required a back-and-forth motion from a vertical orientation of the prototype – time consuming and could cause the destruction of degaussing wires on the shell.

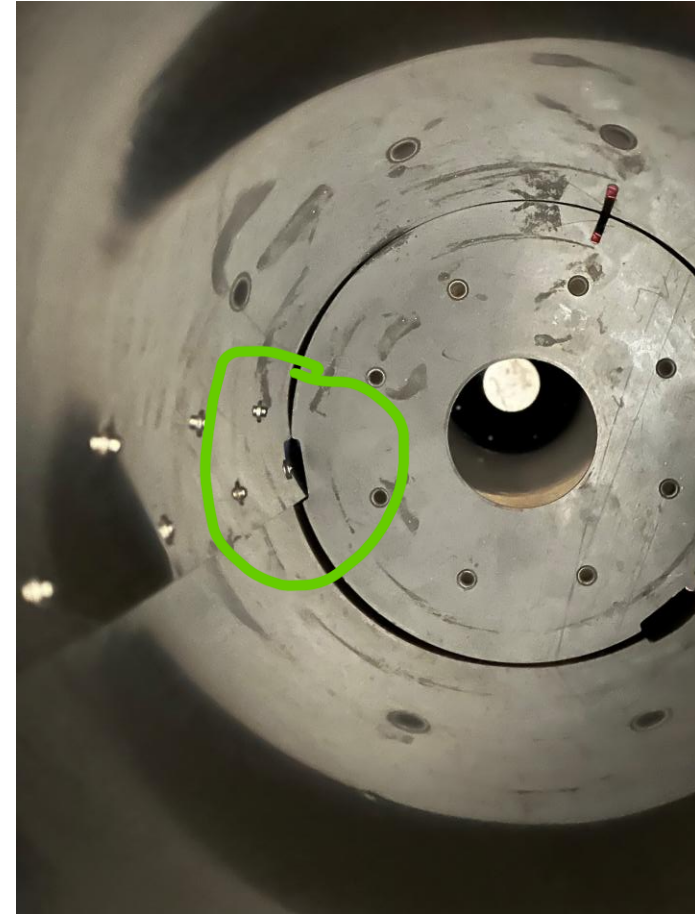


Previous Issues Illustrated

Degaussing Wire Damage



Pop-Rivet Geometry Issues



Small Notes on New Assembly

- Make sure that the end of the MU METAL component is all the way in on the endcap – use a towel or cloth to push from the edge.
- Use friction (i.e. foam blocks) to hold the length of a component in place while installing the rest.
- When installing shielding, ensure that the component with the degaussing wire is placed first.
- When adding the second component, ensure that its edge aligns with the black sharpie line on the first component.
- Finally, when adding the third component, place the edge closest to the second component on top of it, and place the far edge underneath the first component. This ensure the cylindrical shape.
- Put on zip-ties last, and be sure to tighten them carefully (so as to not warp the MU METAL).